

Addendum #1-1

LOT 2301  
N/  
JEFFERSON-CHOUTEAU PARTNERS, LLC  
DATE: 5/2/07 DAILY NO. 334

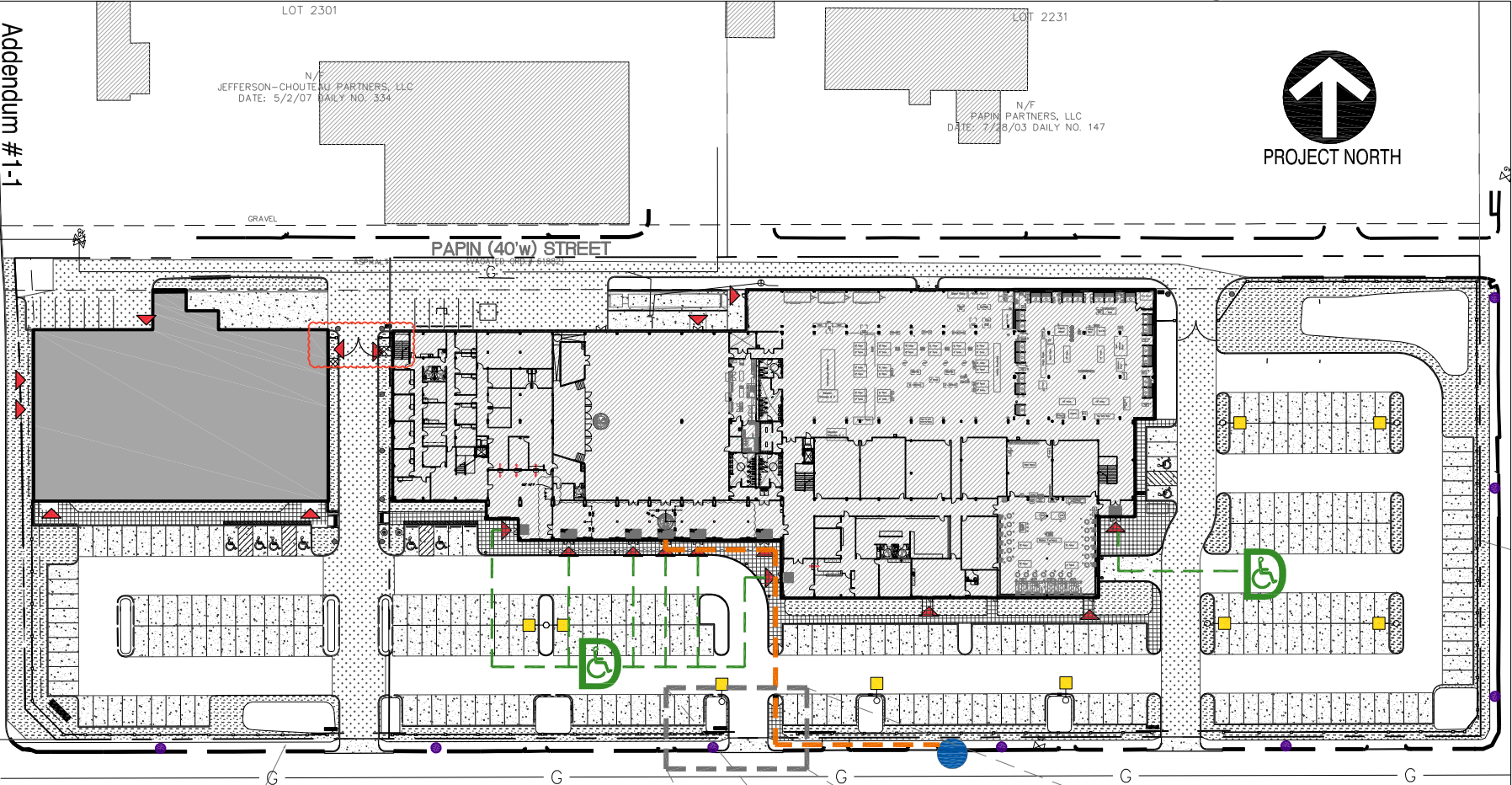
LOT 2231  
N/F  
PAPIN PARTNERS, LLC  
DATE: 7/28/03 DAILY NO. 147



PROJECT NORTH

**LOCAL 36 SHEET METAL WORKERS UNION**

2319 CHOUTEAU AVE.,  
ST. LOUIS, MO 63103

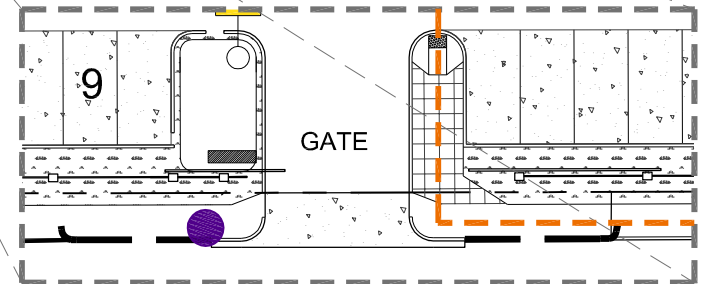


APPROXIMATE LOCATION OF UNDERGROUND ELECTRIC PER MARKS IN THE FIELD

CHOUTEAU (80'w) AVENUE

**LEGEND**

-  PUBLIC BUS STOP
-  ACCESSIBLE PATH 307 FT FROM BUS STOP TO AN ACCESSIBLE DOOR
-  INDICATES ACCESSIBLE DOOR



THE GATE WILL BE OPEN DURING BUSINESS/SCHOOL/EVENT HOURS. HANDICAP ACCESSIBLE ROUTE TO ACCESSIBLE DOORS FROM BUS STOP IS AVAILABLE DURING HOURS OF OPERATION.

Drawing  
cover  
Date 02.11.10  
Project No. B50424.01